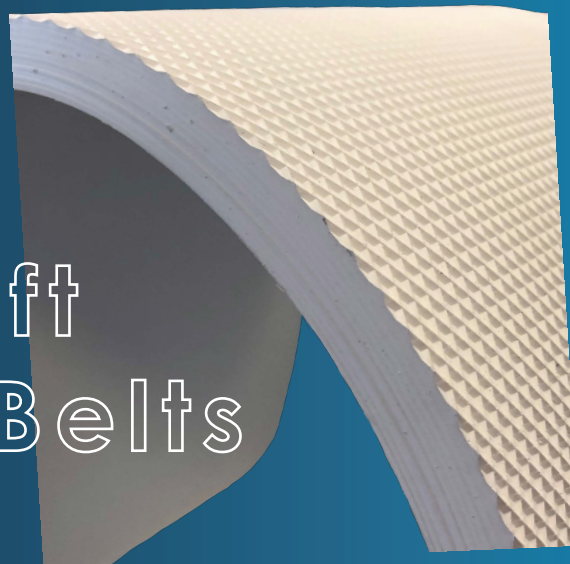


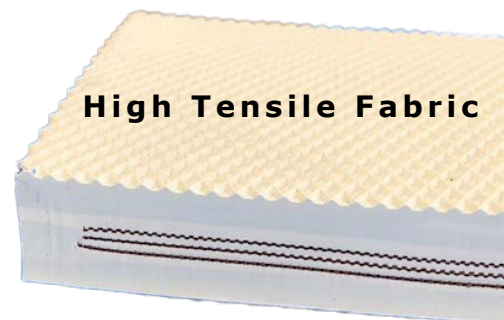
TrenSep Soft Separator Belts



Truly Endless with superior rubber for maximum belt life & throughput



**Truly Endless,
No Splice**



High Tensile Fabric

Compression molded for greater adhesion & uniformity

Rubber compounds have **less compression & maximize wear**

Designed for **maximum throughput**

Truly endless: **no splices** that can fail

Reduce costs with extended belt life

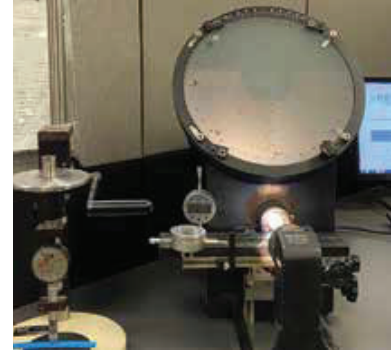
MORE THAN QUALITY BELTING, IT'S THE BELTING EXPERTISE.

Founded in 1919, Shingle Belting is the only U.S. manufacturer of a full line of specialty belting for power transmission and conveying applications. The Shingle Belting product line encompasses many products which are used particularly in the food, textile, paper, printing, automotive, flour mill, and logistics industries.

From its manufacturing facility in King of Prussia, PA, Shingle supports its customers with comprehensive technical service and engineering support. Shingle's product line, manufactured to exacting specifications, also includes fabrication tools for use with any Shingle belting products.

Engineering, installation, and consultation services are available to all customers as is nationwide troubleshooting and repair service – including emergency service.

Shingle is committed to solve any customer problem.



Shingle's quality is supported by in-house R&D.



Off-the-shelf inventory assures prompt delivery of popular belt types.

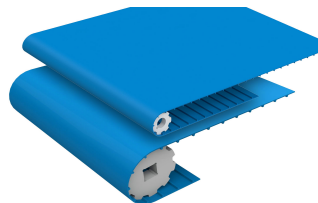
Thermoplastic

We offer a variety of monolithic and plied belting (PVC, urethane, silicone and PE). 40 different types in stock for bakery/snacks, food conveying, tobacco processing, and specialty applications.



Profile Extrusions

Extruded PU & PE round or V profiles. Ideal for metal detectors, canning lines, packaging, and food handling. Round available in solid & hollow. Reinforced and non-reinforced styles available. Custom extrusions are available.



420 Drew Court
King of Prussia, PA 19406
1.800.345.6294
belting@shinglebelting.com
www.shinglebelting.com

